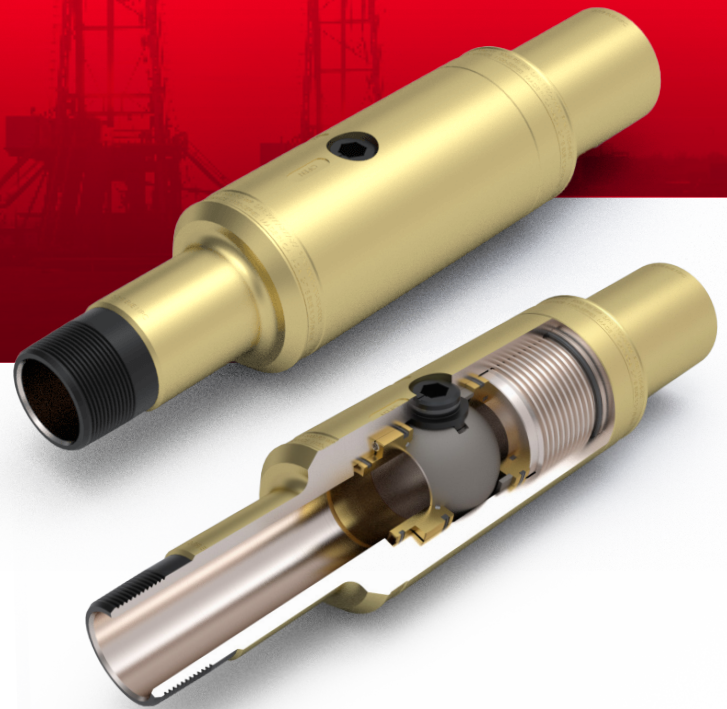


TUBING SAFETY VALVE

Hi-Kalibre's line of high-performance Tubing Safety Valves are used by the well service industry to prevent fluid loss and as a protection against well pressure fluctuations. Our unique design allows for positive sealing under load in gas environments, making these valves the superior choice for snubbing applications as well.



DESIGN FEATURES

- ▶ Full drift design.
- ▶ Positive, gas tight sealing in both directions.
- ▶ High torque body connection ensures seamless operation in the toughest conditions.
- ▶ Low torque operation even when closing or opening under maximum bore pressure.
- ▶ Gas tight stem seal even under maximum pull.
- ▶ Available in a wide range of standard and custom configurations.
- ▶ Reliable, field proven, serviceable design.



TECHNICAL SPECIFICATIONS:

Working pressures: up to 5,000 – 15,000 psi

Bore sizes range: from 2" up to 5"

Available with standard and premium end connections

Pin by Box & Box by Box configurations available

Many configurations fully NACE compliant

ADDITIONAL OPTIONS:

Corrosion-resistant internal body coatings: XYLAN, ENC (Electroless Nickel)

CRA internal components

Major repair kits with replacement internals sold separately