

BALL VALVE

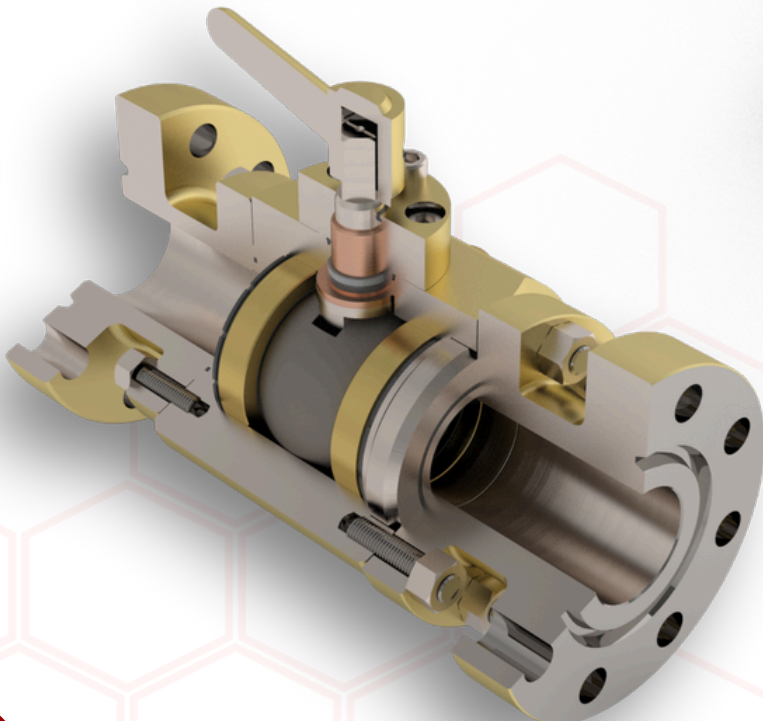
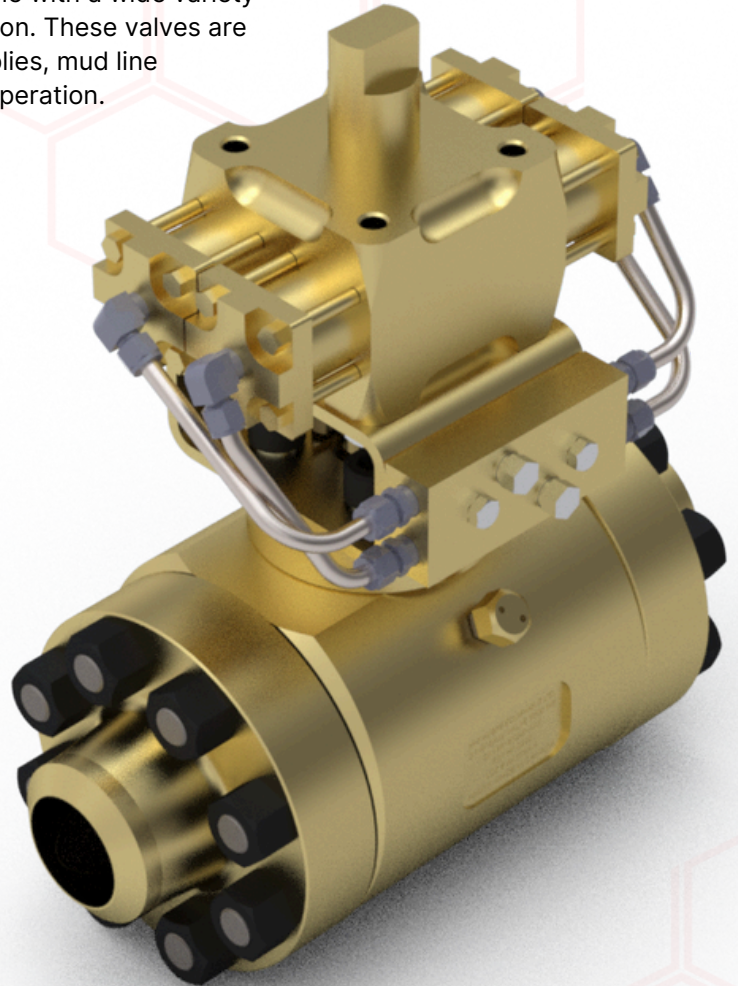
Hi-Kalibre produces our own line of high pressure, high performance quarter turn **Ball Valves**. Our rugged, reliable ball valve design is available with a wide variety of flanged and bolted connections for virtually any application. These valves are typically used in ball valve manifolds, choke and kill assemblies, mud line applications and can be hydraulically actuated for remote operation.

DESIGN FEATURES:

- Soft seat design allows both low-and high-pressure sealing.
- Low torque operation at maximum pressure.
- Forged body and bonnet construction.
- Available in a wide range of standard and custom configurations.
- Reliable, field proven, serviceable design.

TECHNICAL SPECIFICATIONS:

- Working pressures up to **3,000 – 10,000 psi**
- Bore sizes ranging from **1.5" to 3.16"**
- Standard **Flange Swivel** end connections
- Alternative end connections include **Weld End, Hammer Union, NPT, API**
- **Fully NACE** compliant



ADDITIONAL OPTIONS:

- Corrosion-resistant internal body coatings: **XYLAN, ENC (Electroless Nickel)**
- **CRA** internal components
- Major repair kits with replacement internals sold separately

**FOR SPECIFIC MODEL DETAILS OR
ADVANCED CUSTOM REQUIREMENTS,
CONTACT OUR TEAM AT
HKE@HIKALIBRE.COM**