

BLOW OUT PREVENTION EXPERTISE - BY DESIGN

TOP DRIVE DRILL STEM SAFETY VALVES

Hi-Kalibre Equipment **Top Drive Drill Stem Safety Valves (DSSV)** are widely used for both blow out prevention and mud control during drilling operations. Our valves are in service in every oil producing country in the world, and on the biggest rigs in the world. Using our patented Dual Ball Valve, top drive manufacturers can now produce equipment with greatly reduce stack heights while maintaining independent blow out prevention functionality.



DESIGN FEATURES:

- One piece body with full drift bores
- Patented upper split ring and seat design for ease of equalization and improved serviceability.
- Patented Dual Ball technology available, which incorporates two independent valves and single body.
- Can be remotely actuated with our patented Rotary Hydraulic Actuators.
- Balanced stem stop design for accurate, robust stopping and proper ball alignment.
- Gas tight, metal to metal seat seals, in both directions.
- Reduced stem diameters for low torque operation even under maximum pressure.
- Removable inserts protect the stem seal areas in the body and provide maximum body life.
- Available in a wide range of standard and custom configurations
- Reliable, field proven, serviceable design.

TECHNICAL SPECIFICATIONS:

- Working pressures up to **5,000 – 20,000 psi**
- Standard bore sizes ranging from **2" up to 4"** (Custom engineered sizes available)
- Available with standard and premium drill pipe end connections
- Meets or exceeds **API 7-1** and other relevant specifications
- **NACE/H₂S trim** standard
- **Class 2** tested

ADDITIONAL OPTIONS:

- Corrosion-resistant internal body coatings: **XYLAN, ENC (Electroless Nickel)**
- CRA internal components
- API Spec 8C load testing available
- Major repair kits with replacement internals sold separately

FOR SPECIFIC MODEL DETAILS OR
ADVANCED CUSTOM REQUIREMENTS,
CONTACT OUR TEAM AT
HKE@HIKALIBRE.COM



API Spec Q1
Registered
Q1-2163

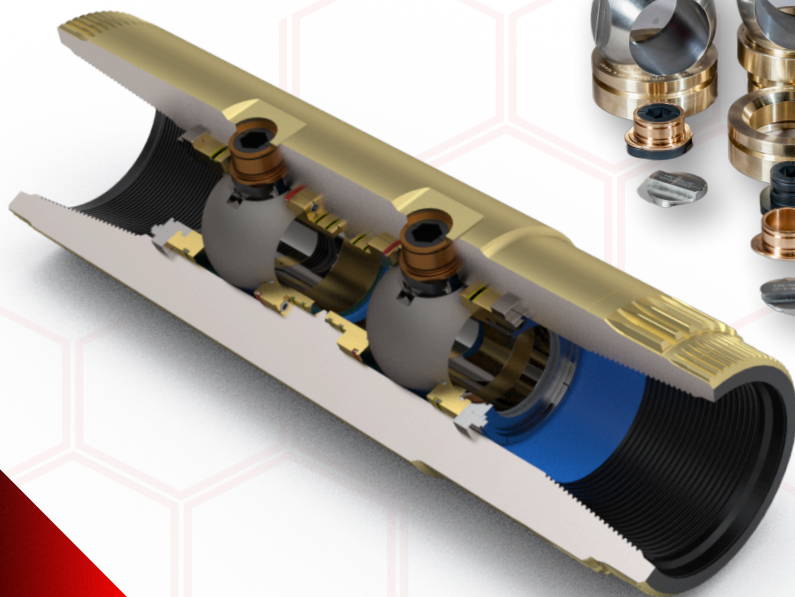


Scope API Q1 (2163) & ISO 9001 (ISO-2260): Design,
Manufacture and Repair of Valves and Related Equipment for
the Oil and Gas Industry



7-1-1144

Scope API 7-1-1144: Threading of
Rotary Shoulder Connections, Drill
Stem Subs and Kelly Valves



7321 68 AVE NW EDMONTON, AB T6B 3T6 780-435-1111

www.hikalibre.com