

BLOW OUT PREVENTION EXPERTISE - BY DESIGN

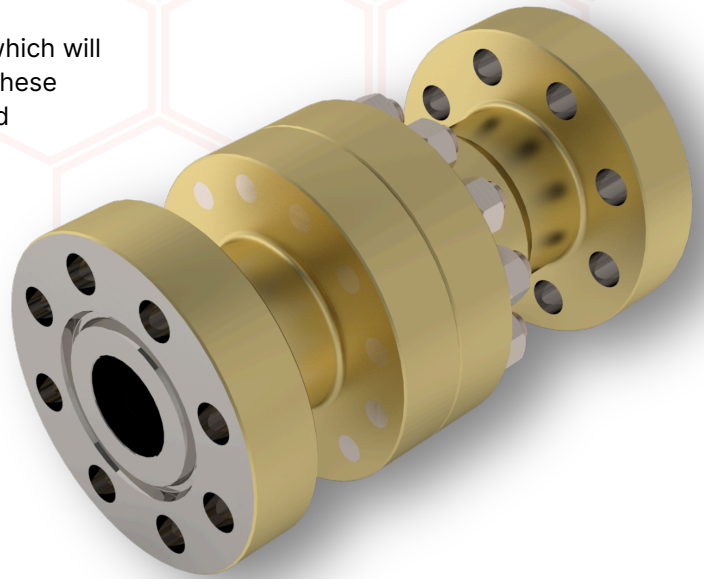


CHECK VALVE

Hi-Kalibre **Check Valves** are an inline, piston type check which will work in any orientation – horizontal, vertical or slant line. These checks have high volume flow in the forward direction, and produce gas tight sealing in the reverse direction.

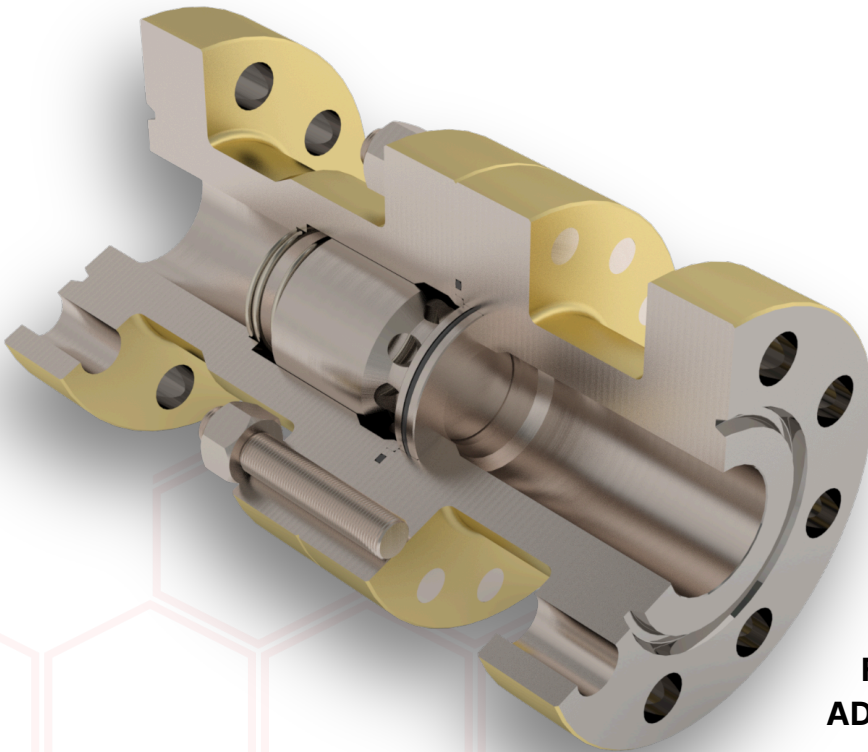
DESIGN FEATURES:

- Forged body and bonnet construction.
- Durable polymer low pressure seal backed by high pressure metal to metal seal, spring energized to ensure positive sealing in any condition.
- Works in any orientation: horizontal, vertical or slant.
- Available in a wide range of standard and custom configurations
- Reliable, field proven, serviceable design.



TECHNICAL SPECIFICATIONS:

- Working pressures up to **3,000 – 10,000 psi**
- Bore sizes ranging from **2" up to 3"**
- Available with **Flange Swivel** end connections
- Alternative end connections available from **Weld End, Hammer Union, NPT, API**
- **Fully NACE compliant.**



ADDITIONAL OPTIONS:

- Corrosion-resistant internal body coatings: **XYLAN, ENC (Electroless Nickel)**
- CRA internal components
- Major repair kits with replacement internals sold separately

**FOR SPECIFIC MODEL DETAILS OR
ADVANCED CUSTOM REQUIREMENTS,
CONTACT OUR TEAM AT
HKE@HIKALIBRE.COM**

7321 68 AVE NW EDMONTON, AB T6B 3T6 780-435-1111

www.hikalibre.com